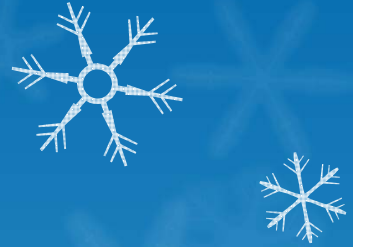


Community Health Needs Assessment

2011

Crawford County



Demographic Snapshot



	Crawford Co.	Pennsylvania	United States
Population	88,765	12,702,379	308,745,538
Household Income	\$38,315	\$49,501	\$50,221
% Below Poverty	16.2%	12.5%	14.3%
Median Home Value	\$95,100	\$152,300	\$185,400
Average Travel to Work	20.9 Minutes	25.4 Minutes	25.2 Minutes
% Foreign Born	1.3%	5.2%	12.4%



Health Snapshot:



	Crawford Co.	Pennsylvania	United States
Death Rate	8.9	8.1	7.6
Cancer Rate	529.3	511.7	461.1
Cancer Death Rate	196.4	191.5	178.1
Heart Death Rate	228.4	215.4	190.9
Hospitalized Rate	113.8	138.6	No Data
Teen Birth Rate	1.6	3.0	4.2
MVA Death Rate	21.6	11.9	14.4
CLRD Death Rate	57.7	42.8	40.8
% Age 65 & Over	16.6%	15.4%	12.9%

Positive Findings:



	Crawford Co.	Pennsylvania	United States
Obese/Overweight	66%	64%	63%
Life Expectancy	76.8		76.5
Violent Crime Rate	13	427	No Data
Homicide Rate	4.2	6.1	No Data
Adult Smokers	16.5%	21.3%	18.4%
Limited in Mental Issues	20.1%	21.1%	20.3%
Do NOT Have Doctor	3.3%	10.7%	17.9%



Challenges

- Hospice utilization; locally 15% vs. 30% expected
- Breast cancer death rate; locally 26.5 vs. 24.1 national average
- Colon cancer death rate; locally 20.6 vs. 17.5 national average
- Motor vehicle accidents death rate; 21.6 vs. 14.4
- Post neonatal infant mortality; 3.5 vs. 2.3



**Crawford
Health
Improvement
Coalition**



2011 Crawford County Survey Monkey

- 234 questions reduced to 77
- Survey was completed online, promoted through local media. Paper and phone options helped to increase the number of responses
- Targeted areas with lower response rates
- 734 surveys completed, representative sample of Crawford County was found
- MMC/Allegheny College collaboration, 2 interns managed most of the surveys

Key Survey Findings



What problems do your kids have?

29.9% Dental Problems

19.3% Weight Problems

18.5% Asthma/Respiratory Problems

11.9% ADD

3.5% Autism

2.2% Tobacco use

0.7% Diabetes

0.7% D&A use

Findings, cont.

- 67.5% have seen dentist within 6 months, 14.5% have not seen dentist in 3 - 5 years.
- 60.4% have dental ins.; 85.4% have medical ins.
- Of those without dental care, 79.2% report that they can't afford care or have no insurance.
- 16.8% have asthma problems.
- 67.7% talk on cell phone while driving, 31.6% text while driving, 91.6% always or usually wear seat belt.
- 80.3% feel that underage drinking is a significant problem.
- 58.1% feel that homelessness is a problem.
- 83.5% feel that poverty is a serious problem.

Target Areas

- Hospice Utilization Rate, Hospice House
- Access to Dental Care
- Breast Cancer Death rate
- Colon Cancer Death rate
- Motor Vehicle Accident Death rate

Questions & Next Steps

